

# PERSONALITY PROFILES

**Dr. Subrata K. Banerjea,** GOLD MEDALIST

B.H.M.S. (HONOURS IN NINE SUBJECTS OF CALCUTTA UNIVERSITY)

FELLOW : AKADEMIE HOMOEOPATHISCHER DEUTSCHER ZENTRALVEREIN (GERMANY)

HOMOEOPATHIC MEDICAL ASSOCIATION OF THE UNITED KINGDOM (U.K.)

DIRECTOR : BENGAL ALLEN MEDICAL INSTITUTE

PRINCIPAL : ALLEN COLLEGE OF HOMOEOPATHY, ESSEX, ENGLAND

“SAPIENS”, 382, BADDOW ROAD, GREAT BADDOW,

CHELMSFORD, ESSEX CM2 9RA, ENGLAND

Tel & Fax No. 44 (0) 1245 505859

# 6 DEPRESSIVE

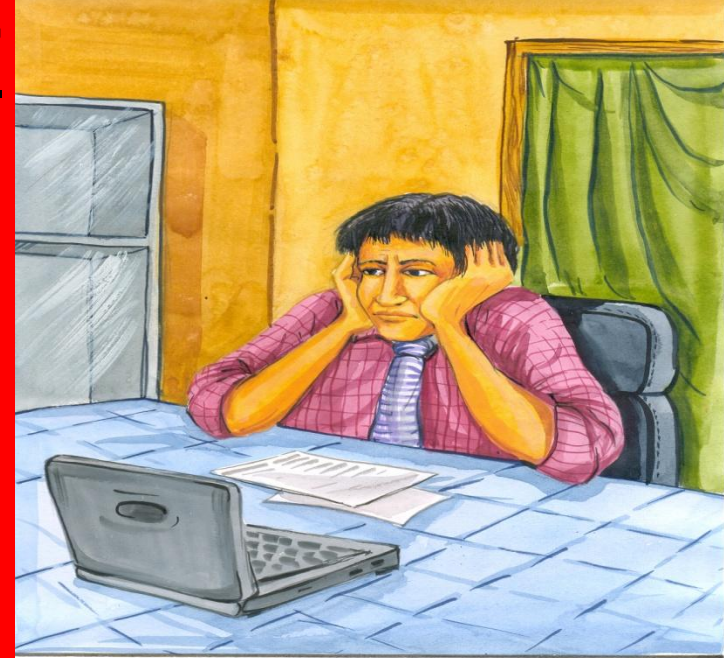
# AURUM MET

- **Aetiology:** (i) Disappointed love; (ii) Reserved displeasure; (iii) Grief; (iv) Anger; (v) Drug and alcohol abuse; (vi) Business humiliations.
- **Manifestation:** (i) Suicidal:-
  - (a) Constantly dwells (+++) → Brooding,
  - (b) Speeding, jumping from height;
  - (ii) Quarrelsome; (iii) Depressed;
  - (iv) Hasty (can not do things fast enough); (v) Sets high standards → when fails → devastated; (vi) Fears: height, heart would stop beating.
- **Modality:** (i) < winter (SADS); (ii) > music, silence; (iii) > when plans or thinks or suicide.

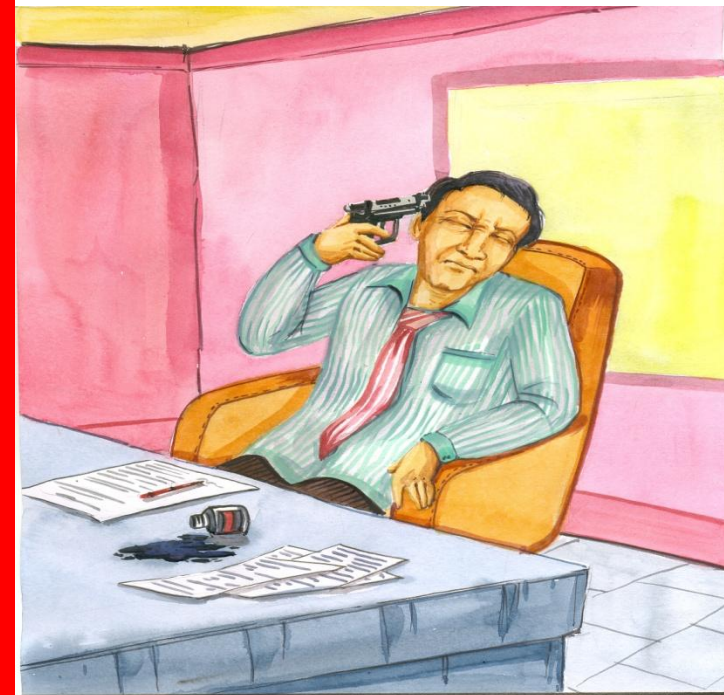
**Mental  
Modalities**

**Aggravation:** From sunset to sun rise. From mental exertion. From melancholic brooding. Anger, contradiction.

**Amelioration:** In the morning (Clarke).



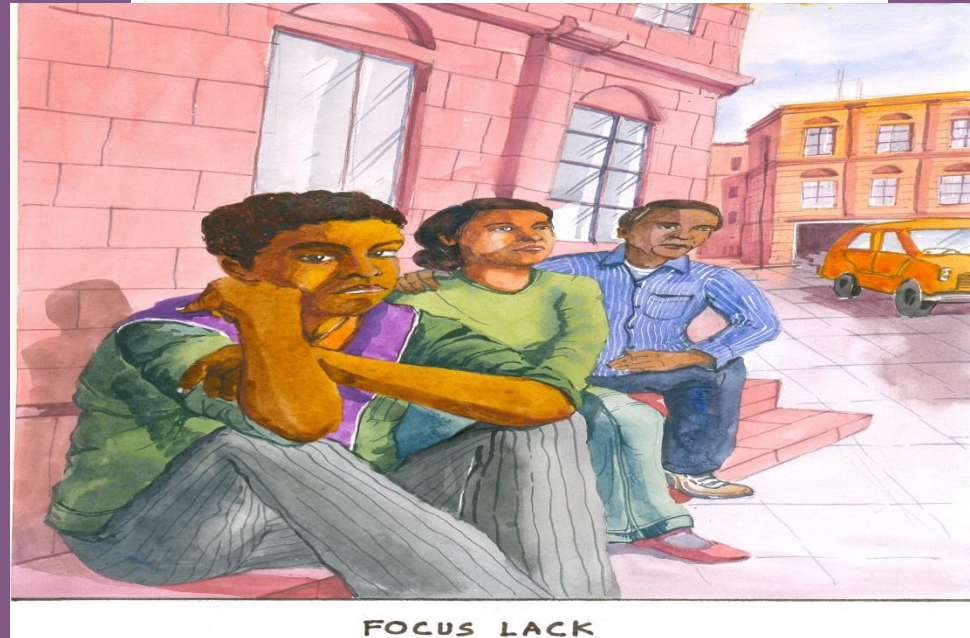
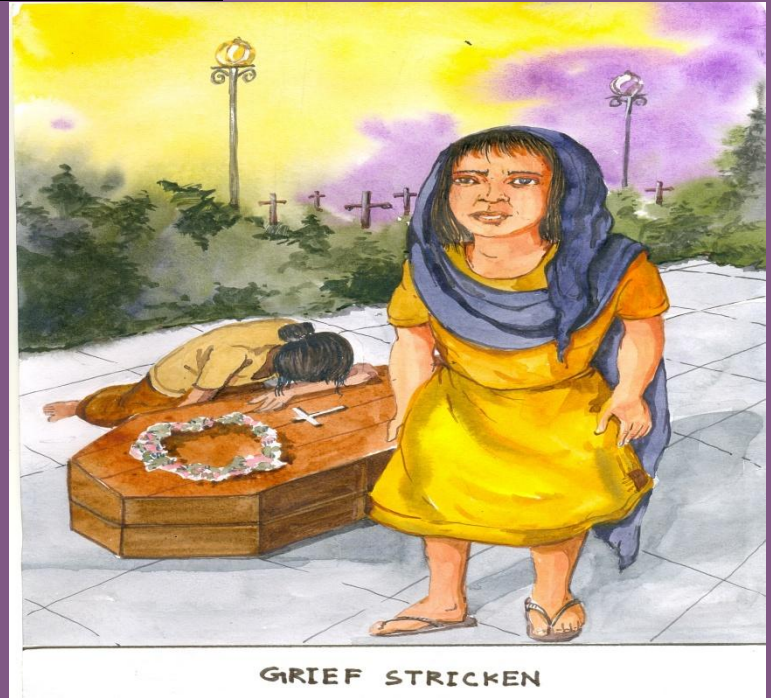
DEVASTATED



SUICIDAL

# CALCAREA PHOS.

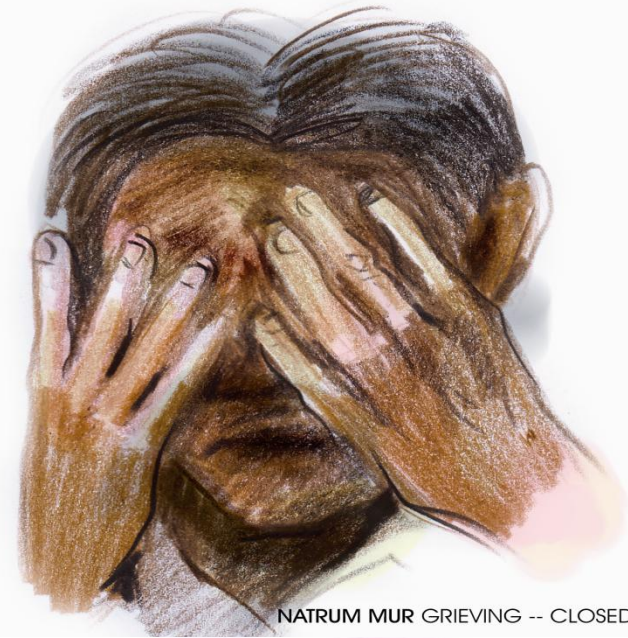
- Aetiology:
  - Disappointed love;
  - Grief;
  - Unpleasant news.
- Nature: Changeable, vagabond (+++), reckless, rebellious.
- Grief stricken → loss of motivation → lack of focus → sighing.
- Unhappy > by stimulation.



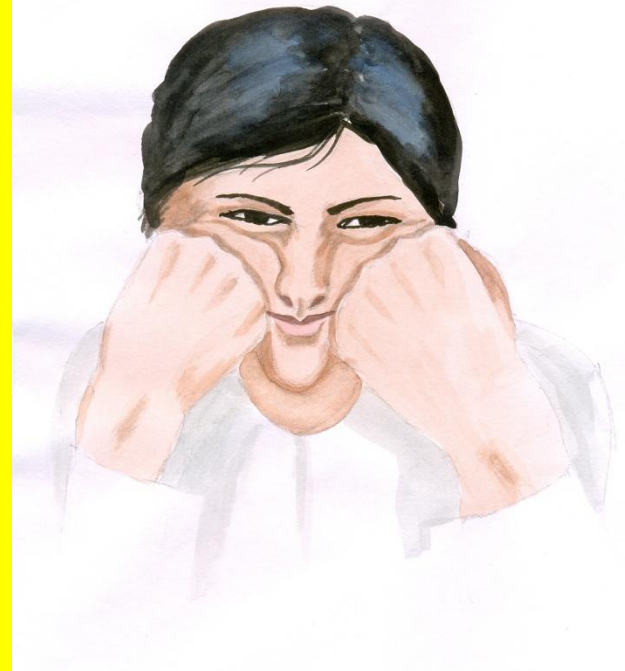


# NATRUM MUR

- **Aetiology:**
  - Disappointed love;
  - Grief;
  - Rejection, humiliation, betrayal;
- **Manifestation:**
  - Closed and withdrawn;
  - Defensive and resentful (on the guard);
  - Difficult to forgive;
  - Loneliness and introverted;
  - Sensitive.
- **Modality:** < from consolation.
  - Aggravation: from sunrise to sunset, from consolation, during full-moon, from mental exertion (Lippe), from Noise – noise of bell of firing of pistol (Kent) from music. Consolation, mental exertion, talking, reading, anger, grief, vexation.
  - Amelioration: in open air, cold bathing
- **Mental modalities**



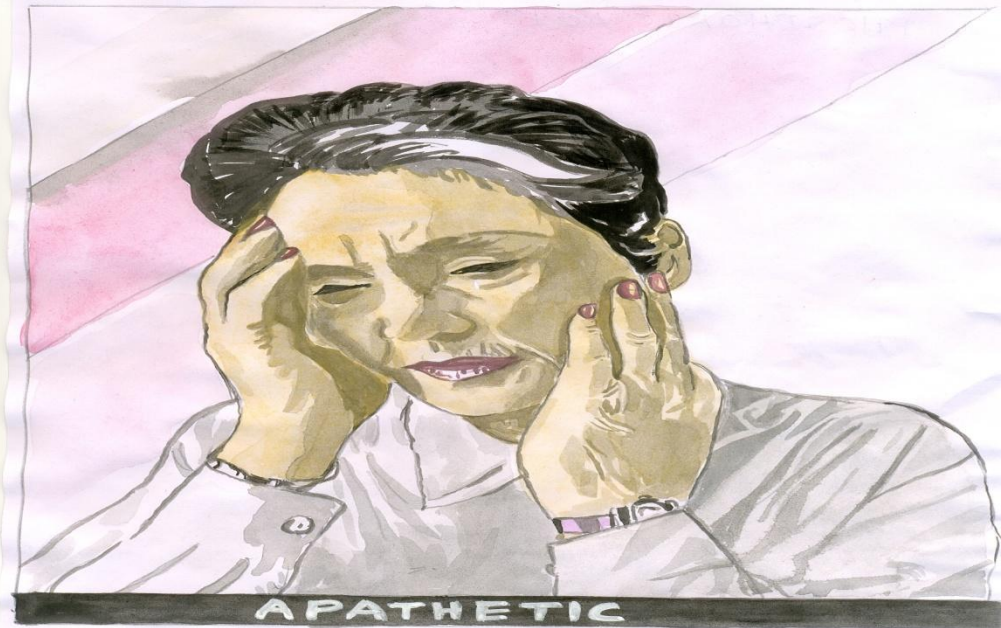
NATRUM MUR GRIEVING -- CLOSED



NAT.MUR. DEPRESSED - SAD - LOVE

# PHOSPHORIC ACID

- Aetiology:
  - Disappointed love;
  - Homesick;
  - Loss of business.
  - Embarrassment and humiliation;
  - Grief.
- Indifferent, listless, withdrawn, forgetful.
- Mental debility → Physical debility.
- < mental exertion.





# PSORINUM

- **Aetiology:**
  - Emotional excitement and anticipation;
  - Loss of wealth; relationship.
- **Manifestation:**
  - Anxious & quarrelsome;
  - Pessimistic;
  - Suicidal;
  - Depressed: hopeless, introvert, takes sorriest view of everything;
  - Total forgetful
- **Modality:** < full moon, periodic, before a storm



# PULSATILLA

- **Aetiology:**
  - Disappointed and love;
  - Humiliation;
  - Betrayal;
  - Abuse and unloved.
- Forsaken, emotional, tearful, amiable, demanding and clingy. Bashful.
- Needs support and assurance → demanding → needs approval nurturing.
- > consolation.
- Mental modalities: Aggravation:
  - (i) Evening and night; (ii) Twilight;
  - (iii) Alternate evenings;
  - (iv) Change of weather;
  - (v) Detailing the symptom.

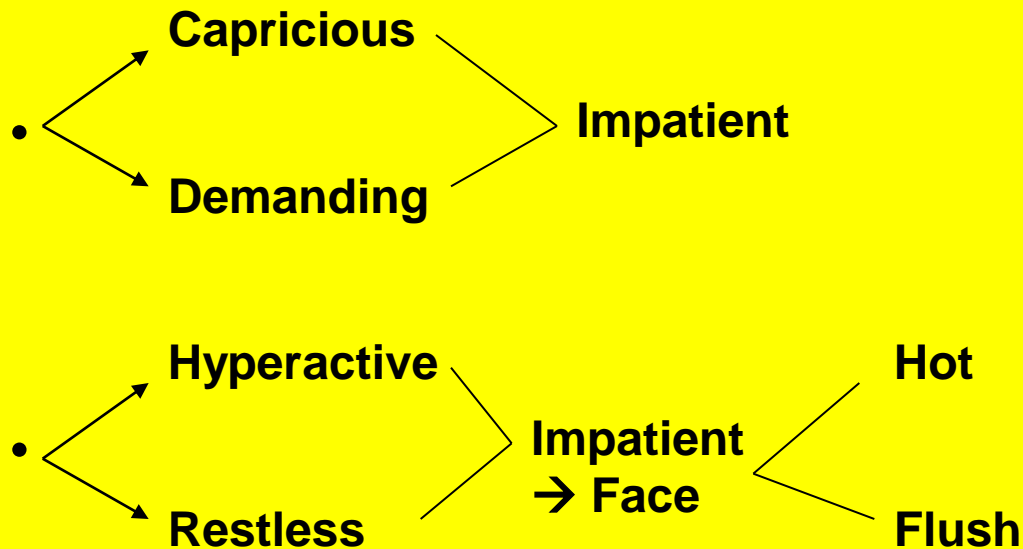




# **6 IMPATIENTS**

# CHAMOMILLA

- Impatient feels everything goes too slowly.
- Impatient with heat.
- Impatient → Snappish.
- Aversion of being interrupted  
→ if interrupted → impatient.



- Mental Modalities: Aggravation: After a fit of anger of mother.



# IGNATIA

- Impatient during menses.
- Grief (acute, raw)
  - ↳ Sighing
  - ↳ Sobbing → Impatience
- Contradictory emotional state
  - ↳ Happy & joyful
  - ↳ Impatient & intolerant
- - ↳ Historical
  - ↳ Nervous → Hypersensitive → Impatient
- - ↳ Quick perception
  - ↳ Rapid execution → If interrupted → Impatient
- Impatient
  - ↳ Agg. From tobacco
  - ↳ Amel. When travelling
- Mental Modalities: Aggravation: Rage, grief, anger, mental exertion, effect of bad news, reserved displeasure, shake, mortification.



IGNATIA - IMPATIENT



IGNATIA - NOISE SENSITIVE - IMPATIENT

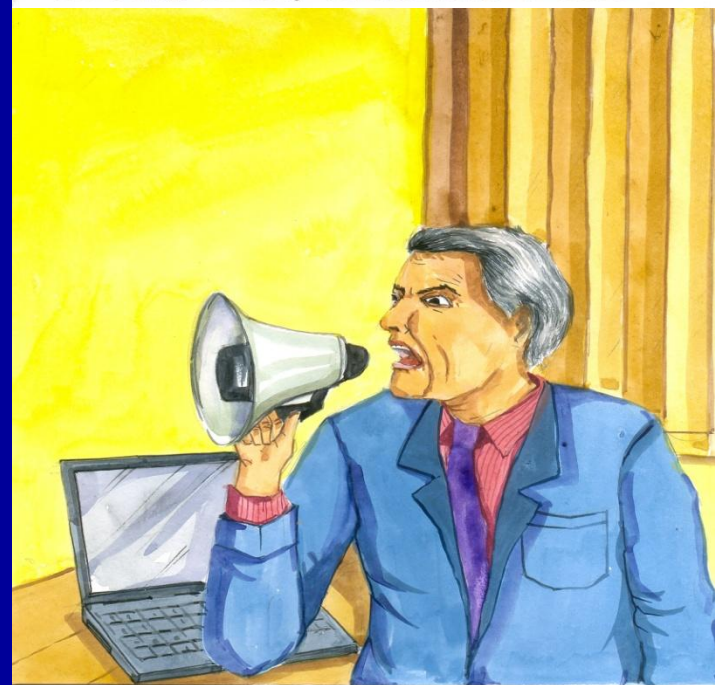


# NUX VOMICA

- Impatience with coryza.
- Impatience when spoken to.
- Impatient
  - during work
  - infuriated by slow workers
- Purge to achieve
  - Apexians
  - Ambitious
 When confronted → Impatient
- - Fastidious
  - Organised
  - Fussy
  - Precise
 → When order is cost
  - Anger
  - Impatient
- Un-resolved anger
  - Aggressive, destructive
  - Easily offended impatient
- Mental Modalities: Aggravation: Mental exertion, anger, music, emotion, anxiety, worry.



NUX&TUB-ANGRY-MALICIOUS-VINDICTIVE



DICTATORIAL

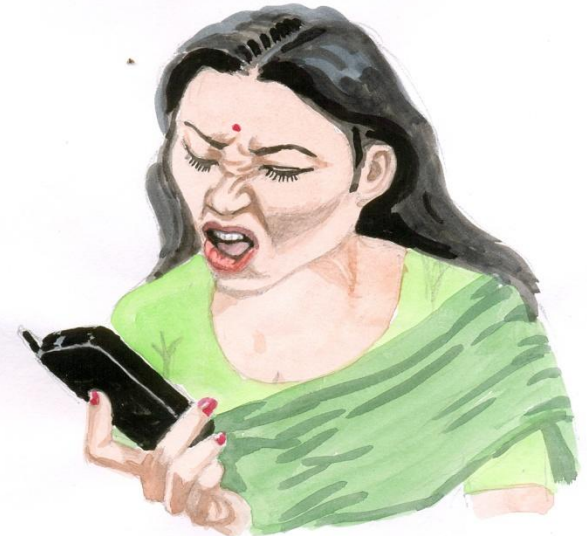
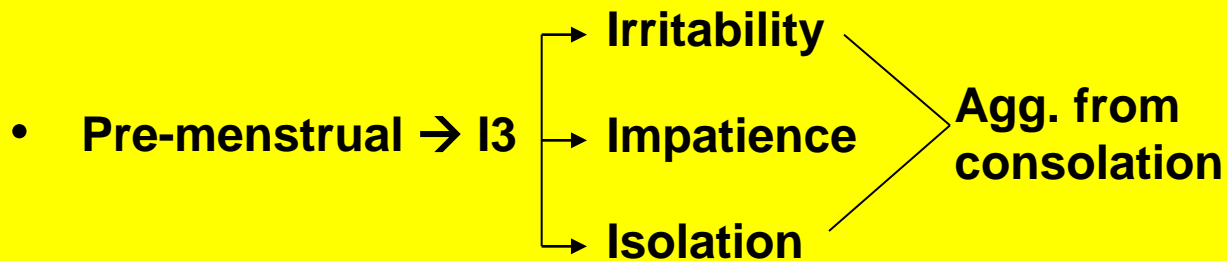
# SEPIA

- Impatient while sitting.

- Impatient during work.

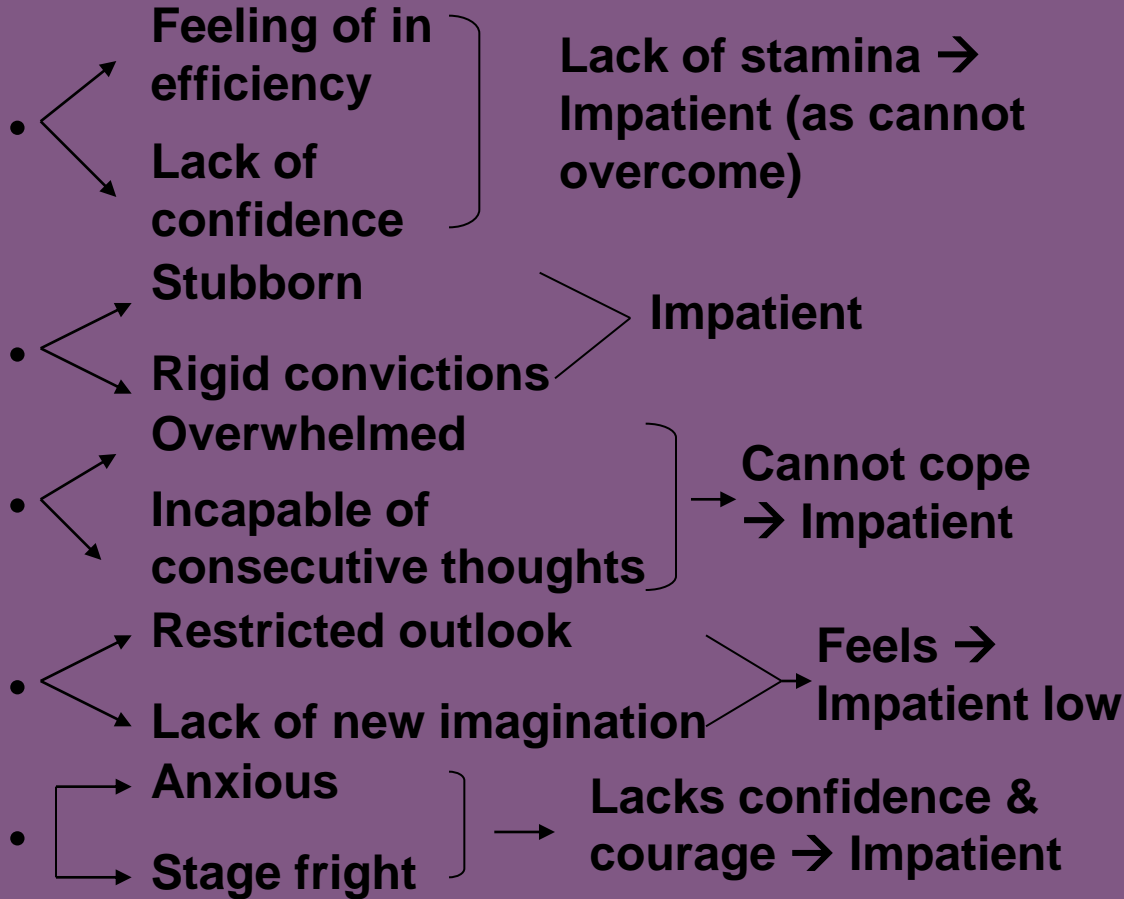


- Aversion to company → if disturbed → Impatient.



# SILICEA

- **Impatient: constant.**



- **Mental Modalities**
  - Aggravation: When spoken kindly to, magnetism.
  - Amelioration: From magnetism and electricity (Lippe).



SILICEA - CANNOT COPE - OVERWHELMED



SILICEA - LACK OF STAMINA - IMPATIENT



# TUBERCULINUM

Impatient

Discontented

Unfulfilled

Needs excitement

Drugs

Travelling

Crime

When not met  
→ Impatient

Stubborn

Malicious

Impatient

Dissatisfied → Easily bored  
→ Makes him impatient.

“No” child

Disobedient

When objected  
→ Impatient

Compulsive behaviour

Unpredictable behaviour

When criticised

Impatient

Curse & swear

Violent & constructive



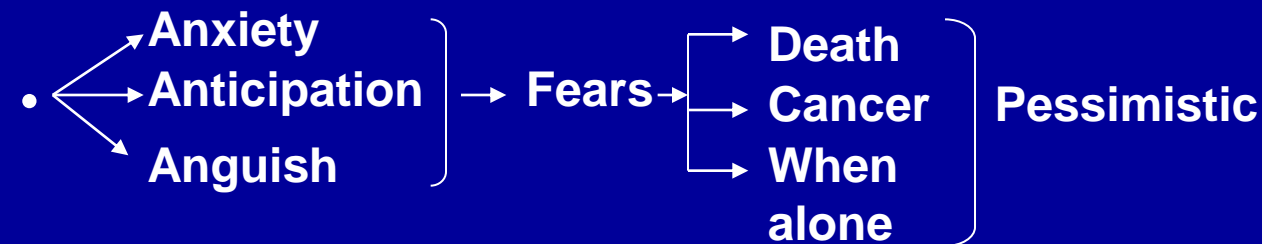
TUB & CHAMO - ANGRY-IRRITABLE -  
PULLS HAIR



TUBERCULINUM - ANGRY & FRUSTRATED

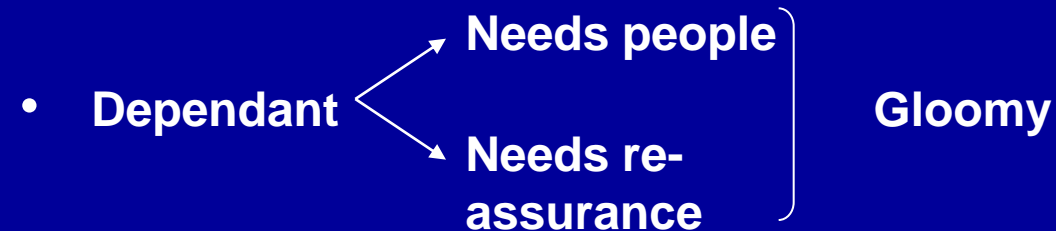
# **6 PESSIMISTIC**

# ARSENICUM ALBUM



- Loathing of life → Despair of salvation / record.

- Weary of life → Panic attacks.



- Mental Modalities: Amelioration: Talking, company.



ARS. ALB TENSED



ANXIOUS -- NERVOUS - 2



# AURUM MET

- Depressed & despondant →
  - Gloomy
  - Pessimistic
- Dwelling on suicide
  - Gloomy
  - Taciturn
- Inferiority complex.
- Fears
  - Failure
  - Not coping
  - Heart disease
  - Depressed
  - Suicidal
- Sets high standards
  - when fails
  - Depressed
  - Devastated
- “Winter blues”
  - SADS
  - Pessimism
  - Meditation amel.
  - Music amel.
- Mental Modalities
  - Aggravation: From sunset to sun rise. From mental exertion. From melancholic brooding. Anger, contradiction.
  - Amelioration: In the morning (Clarke).



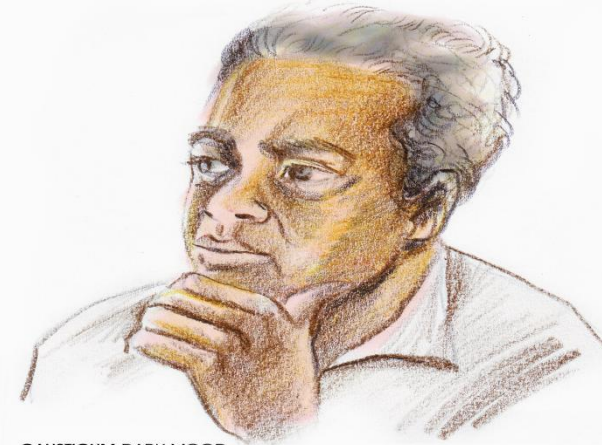
DEVASTATED 2



FORSAKEN — WITHDRAWN

# CAUSTICUM

- Dark
  - Mood & temper
  - World goes dark
  - Fears as if committed a crime→ Hopelessness
- - Introvert
  - Grief sufferer→ Broods inside
- Long lasting grief → Holds grudges → Pessimistic.
- Fears
  - Impending misfortune
  - Something will happen→
  - Anxious
  - Despondent
  - Sad
- Tearful, at trifles.
- Hates authoritarian control
  - Stiff & rigid
  - Rebellious→ Get no where → Darkness around
- Mental Modalities: Aggravation: Caused by grief sorrow, sudden emotion.



CAUSTICUM DARK MOOD

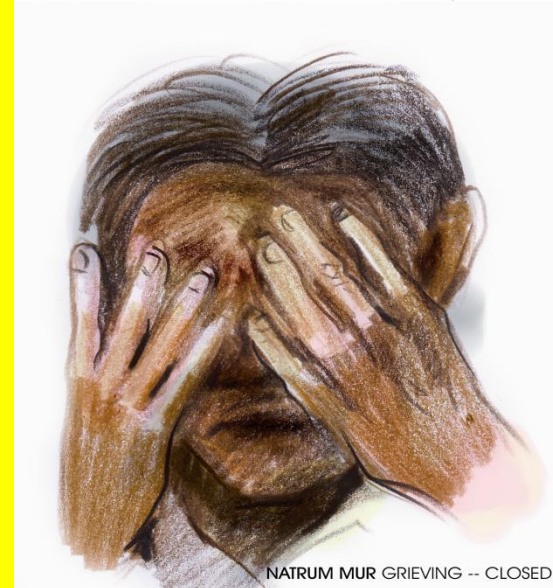
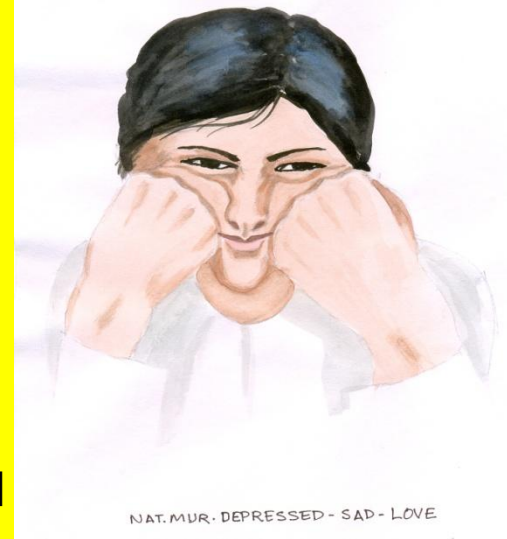


PESSIMISTIC 2



PESSIMISTIC

# NATRUM MUR



- Silent grief → Despondent
  - ↳ Can not cry
  - ↳ Introvert
- Anxiety → Hypochondriacal.
- Deception → Nauseas
  - ↳ Grief
  - ↳ Mortification
 } Dejected  
 } Discontented
- Displeased with everything
  - ↳ Easily hurt
  - ↳ Resentful
- Loathing of life
  - ↳ Sad
  - ↳ Gloomy
- Dwells on
  - ↳ Past criticism
  - ↳ Humiliation
  - ↳ Rejection
 } Introvert } Averse  
 } Loner } consolation  
 } → Closed
- Mental modalities
  - ↳ Aggravation: from sunrise to sunset, from consolation, during full-moon, from mental exertion (Lippe), from Noise, - noise of bell or firing of pistol (Kent) from music. Consolation, mental exertion, talking, reading, anger grief, vexation.
  - ↳ Amelioration: in open air, cold bathing.



# NITRIC ACID

- **Anxious**
    - About health
    - About infection
  - **Fears**
    - AIDS
    - Cancer
    - Infectious disease
  - **Unpleasant, nasty**
    - Quarrelsome
  - **Selfish**
    - Complaining
    - Discontentment
  - **Long lasting**
    - Anxiety
    - Worry
  - **Suicidal disposition**
    - Prostration of mind
    - Loss of sleep
  - **Hatred**
    - Unmoved by apologies
    - Anger, headstrong
  - **Mental Modalities: Aggravation: Long lasting anxiety, over exertion, for nursing a sick, loss of dearest friend.**
- Most hypochondriacal medicine in our Materia Medica**
- Negative**
- Pessimistic**
- When useful**
- Hopeless**
- Dissatisfaction**
- Pessimism**
- Morose**
- Ill-humour**



NITRIC ACID - WORRY - PESSIMISM



NITRIC ACID - FEARS CANCER - PESSIMISTIC

# PSORINUM

- Despair of
  - Salvation
  - Recovery
- Fears
  - Failure
  - Future
  - Not being loved } Takes sorriest view of everything
- Most depressed medicine in Materia Medica → Hopelessness.
- Lack of
  - Positive thoughts
  - Ambition
  - Hope
  - Life impulse } Negative thoughts
- - Anxious
  - Depressed } Suicidal
- Forsaken feeling
  - Suicidal disposition
  - Aversion to mental work



HOPELESS - 2



MOST DEPRESSED

# **6 TEMPER TANTRUM (IN CHILDREN)**

# ANTIMONIUM CRUDUM

- Temper tantrum → manifested as
  - Extreme stubborn
  - Sulky
- Temper tantrum
  - Aversion to being touched.
  - Aversion to be looked at.
  - Aversion to being batched in cold water.
- Tantrum
  - Ill-humour.
  - Fretful.
- Tantrum
  - Irritability from trifles.
  - By touch.
 Compared with race of surine for stubbornness
- Tantrum tantrum
  - Stamps the feet.
  - Madness → Anger → Sulk (+++)
- Intolerant of contradiction → Tantrum.
- Mental modalities: Aggravation (i) In open fire (Kent said, open fire is wholly against the Ant. Crud. Patient); (ii) In moon-light.



ANTIM CRUD - STUBBORN FAT BOY



ANTIM CRUD - AVERSION TO BE LOOKED AT - TANTRUM



ANTIM CRUD - AVERSION - LOOKED AT



ANTIM CRUD - TANTRUM - FRETFUL



# CALCAREA PHOS



**AGGRESSIVE 3**



**FEARLESS**

# CHAMOMILLA

- Tantrum → manifested as
  - Vocal tantrum.
  - Crying & howling.
  - Whining restlessness (continuous)
- Tantrum
  - Abusive
  - Insulting
  - Spiteful
 → Better when carried in open air
- Anger
  - With red flushed face.
  - Violent.
  - From interruption.
 → “too ugly to live”
- - Cross
  - Restless
  - Uncivil
  - Quarrelsome
 > Demanding → tantrum → Vocal (makes loud shrill whining noise/cry)
- Aversion
  - Being spoken to.
  - Being interrupted.
  - Being touched.
 > Quarrelsome → Tantrum
- - Snappish.
  - Obstinate.
  - Impatient.
 >
  - Violent.
  - Spiteful.
- Mental Modalities: Aggravation: After a fit of anger of mother.



SNAPPISH CHILD - 2



TEMPER TANTRUM - VOCAL

# CINA

- Anger → In worm infestations
  - ↳ Screams during sleep.
  - ↳ Strikes at all around him/her.
- Gestures
  - ↳ Pricking nose & lips.
  - ↳ Itches rectum.
  - ↳ Striking.

> Tantrum
- Throws things away.
  - ↳ Demanding toys (when offering → rejects).

Rude

  - ↳ Pitiful weeping.
  - ↳ Complaining cry.
- - ↳ Complaining (+++).
  - ↳ Contradiction intolerant.
  - ↳ Defiant.

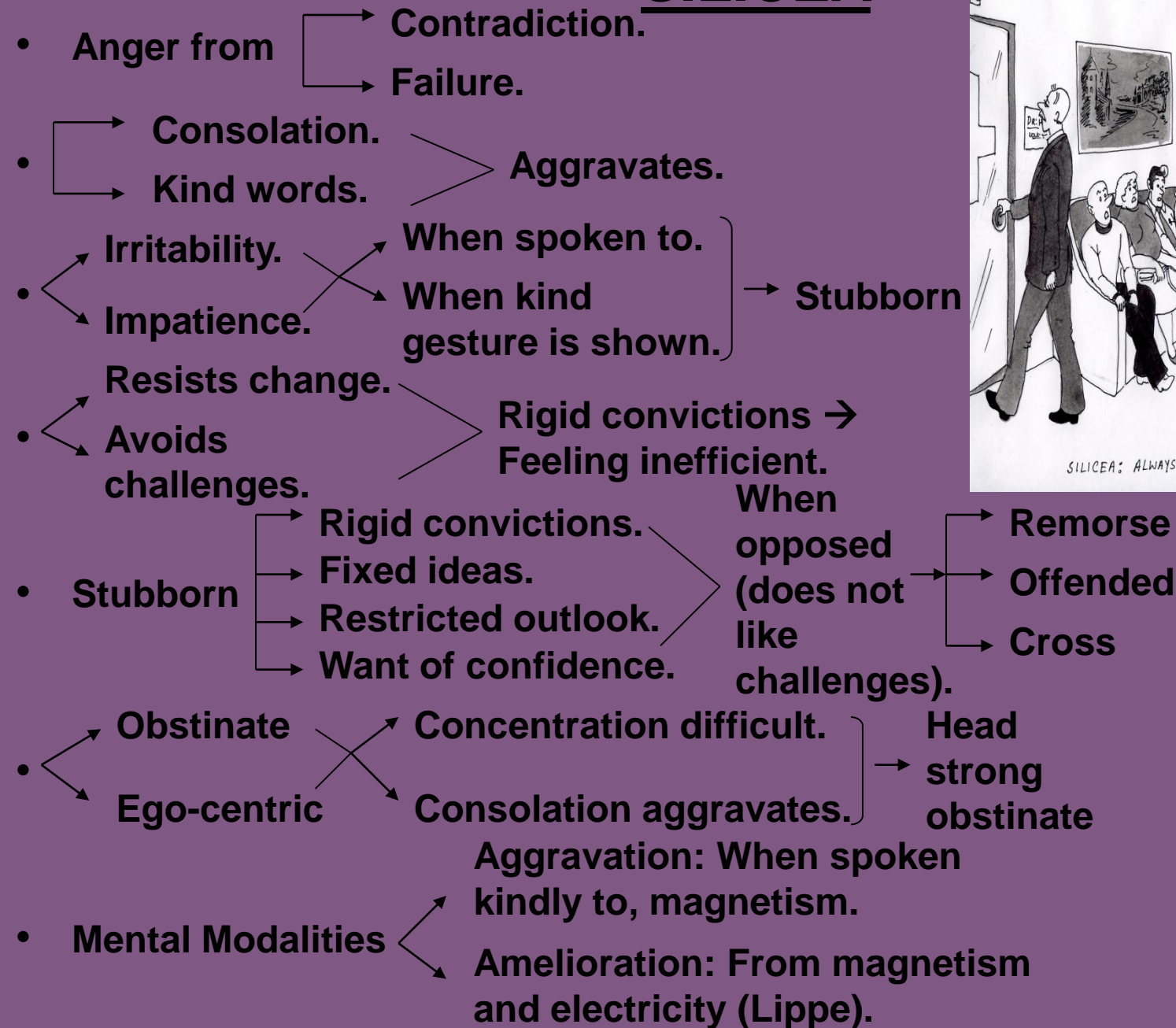
Can not be qualified by → Tantrum carrying.
- Cranky
  - ↳ Capricious

Canine hunger → When not met → Complaining cry (tantrum)
- Cross → Complaining 6 cycle.





# SILICEA



# TUBERCULINUM

- Temper tantrum  
→ Manifested as
  - Behavioural.
  - Wandering.
- - Restless.
  - Hyperactive.
 Needs excitement (drugs, alcohol) → When not met → Tantrum.
- Tantrum
  - Striking himself.
  - Knocking his head against wall.
  - Throws & breaks things.
 → Violent.
- Offended easily
  - Moaning.
  - Groaning.
  - Whining.
  - Complaining.
- Tantrum → Cry
  - Plaintive cry.
  - Constant complaining.
  - Nasal tone in crying (whining).
- Stubborn
  - Malicious.
  - Impatient.
  - Violent.
 Destructive child.  
 “No” child.



TUBERCULINUM - TEMPER TANTRUM BOY



TUBERCULINUM - TANTRUM BOY

**THANK YOU!**